



www.kamkiu.com

본사 HQ: () Kam Kiu Aluminium Products Group Ltd.

Add: Rm17, 18/F, Concordia Plaza, 1 ScienceMuseum Road, Tsimshatsui East, Kowloon, Hong Kong
Tel: +852 2302 0808
Fax: +852 2302 0062
Email: info@kamkiu.com

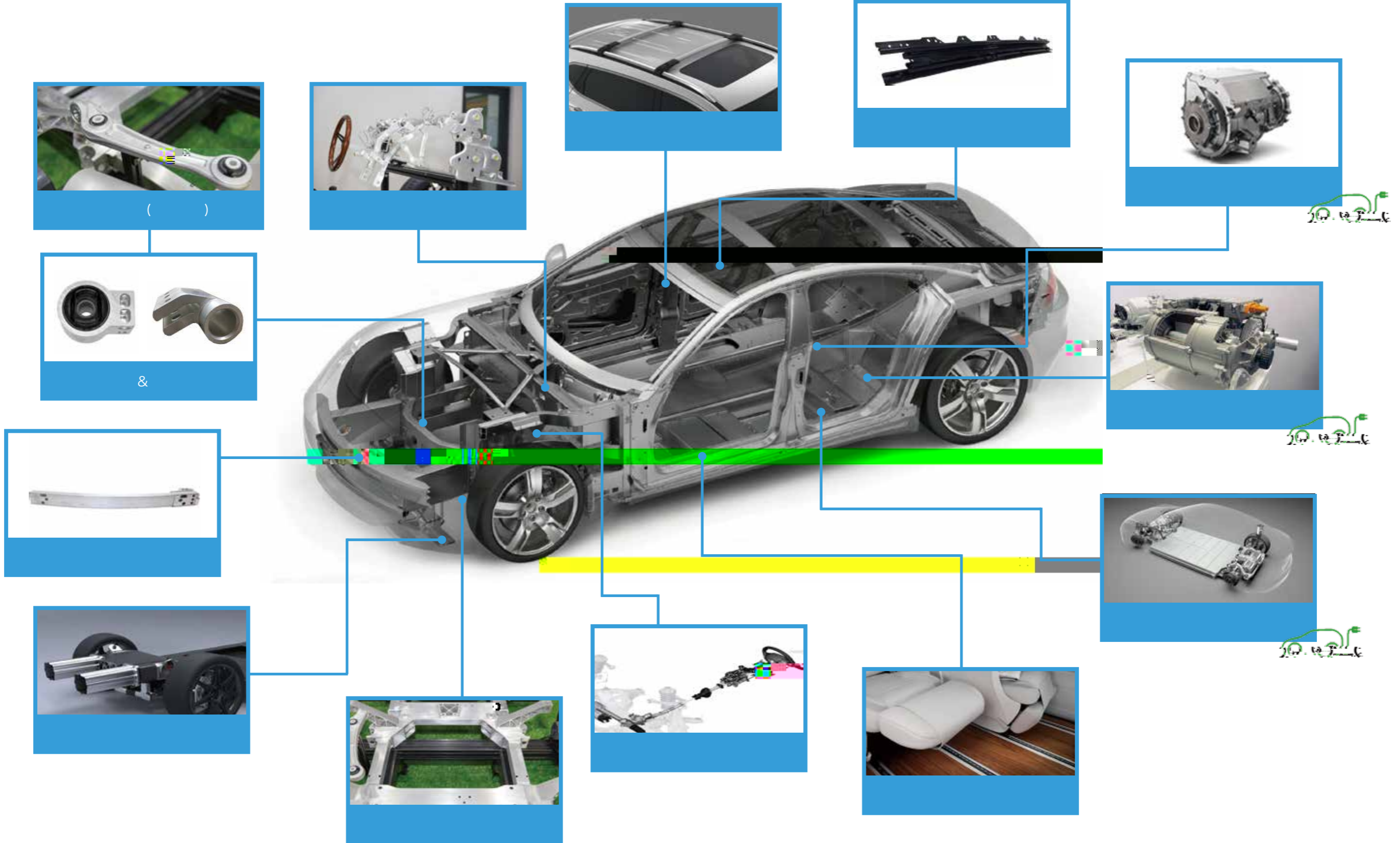
생산 기지 Production Facility: () Taishan City Kam Kiu Aluminium Extrusion Co.,Ltd.

Add: Dajiang County, Taishan City, Guangdong, China
Post: 529261
Tel: +86 (750) 543 8596
Fax: +86(750) 543 8173





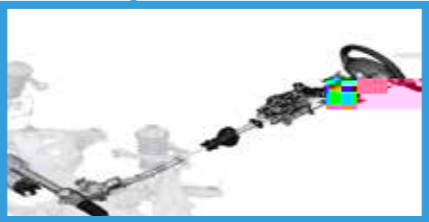
()



()



&



CNC 가

3 ~5 CNC가
가



가

가
가



가

3 / , 5
1 5000 /



가



가 11,000



PMT

ThermoFisher
SCIENTIFIC



가



: 0-50KN, 0-200KN, 0-100KN

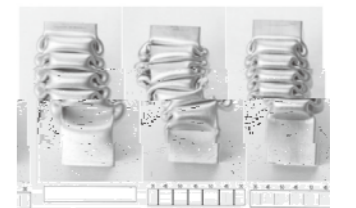


가

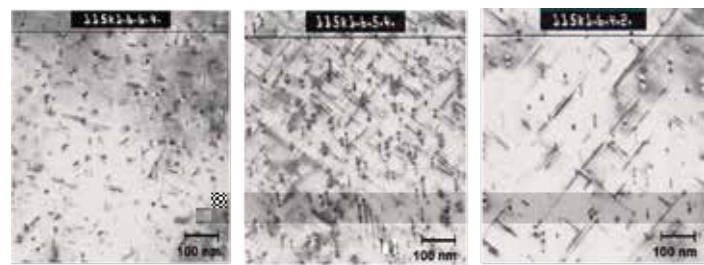


CMM3

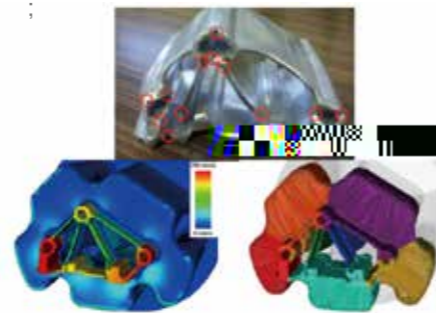
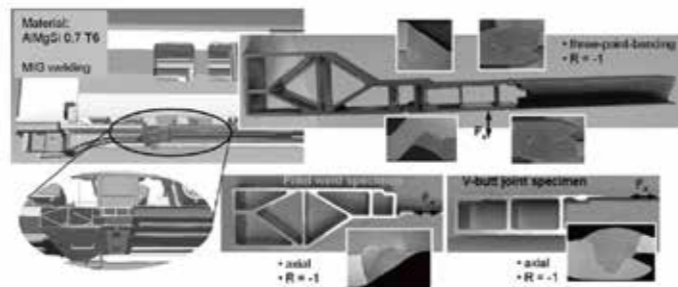
HEXAGON
METROLOGY



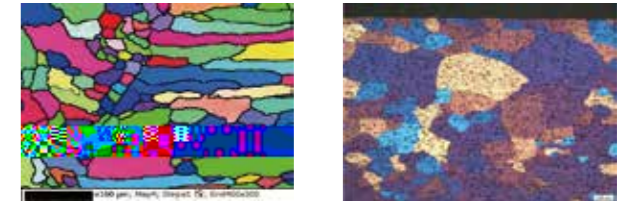
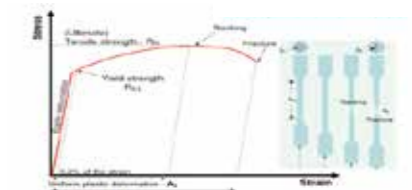
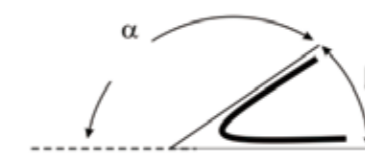
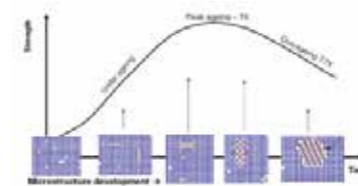
- 가 (MIG\FSW)

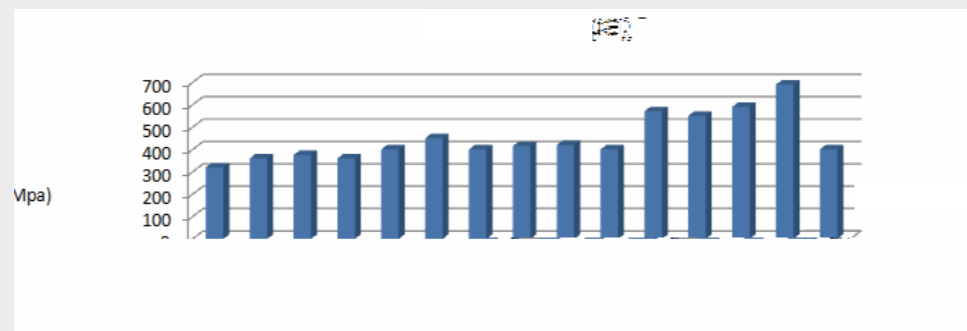
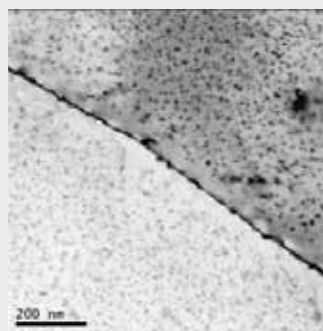


Peal



SCC IGC





30 km/h,

200kn

2016

<IATF16949

>

가

가

SAP

가

